

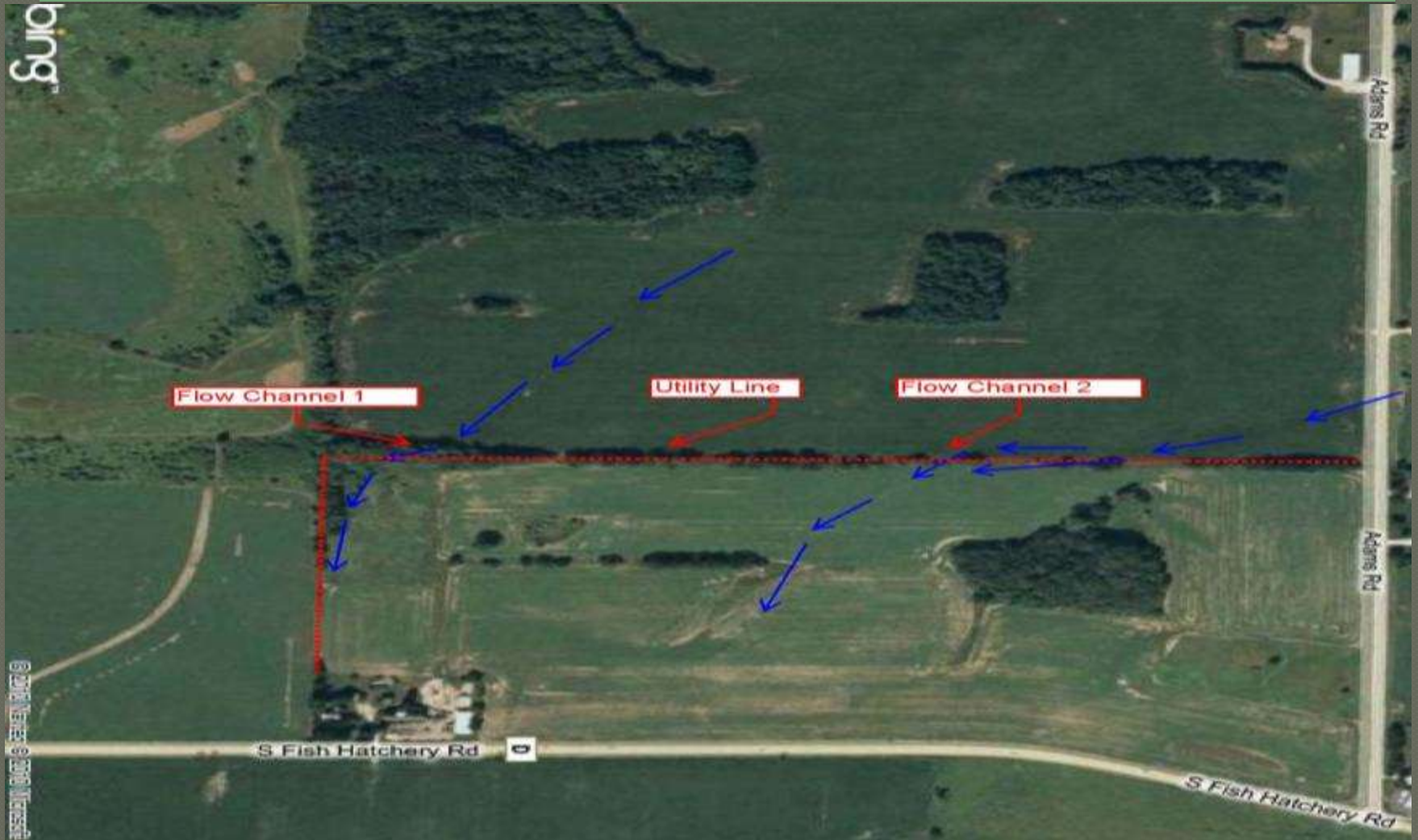
Erosion Control and Restoration

Linear Utility Project
Dane County, Wisconsin



Robert E. Lee & Associates, Inc.
Engineering, Surveying and Environmental Services

Project Overview



Summary

- New right-of-way acquisition
- Utility to be installed down the fence line between two landowners
- Two significant drainage channels cross the right-of-way
- Thick vegetation with little to no undergrowth
- Deep scouring at western edge of right-of-way at Flow Channel 1
- Heavy erosion in the farm field downstream of Flow Channel 2
- Landowners concerned that clearing of the fence line vegetation will result in increased erosion of his field and across the right-of-way

Flow Channel 1



Flow Channel 2



Pre-construction ECMs installed

Flow Channel 1



Flow Channel 2



Right-of-way cleared Flow Channel 1



Flow Channel 2



ECMs beefed up at Flow Channel 2



Long Term Solution

Flow Channel 1

- ◉ Shape channel to smooth scouring areas
- ◉ Mat channel with North American Green VMax C350 Permanent Turf Reinforcement Mat
- ◉ Mat slope sides with North American Green DS 150 Double Net Straw Blanket
- ◉ Biodegradable staples used
- ◉ Install permanent rip-rap ditch check

Installation Flow Channel 1



Finished Installation



March 2010



April 2010



Long Term Solution

Flow Channel 2

- Reshape and broaden flow channels
- Mat channel with North American Green VMax C350 Permanent Turf Reinforcement Mat
- Install permanent ditch check in center of channel using existing stones from the right-of-way
- Mat smaller channels with North American Green DS 150 Double Net Straw Blanket
- Leave ErosionEel and rock bag ditch check in place until stabilization is achieved.
- Seed and mulch remainder of the right-of-way

Installation Flow Channel 2



March 2010



April 2010



Discussion????



Robert E. Lee & Associates, Inc.
Engineering, Surveying and Environmental Services